

QINSUN

Stable Reliable Consistent



Carpet Flammability Tester G245

Carpet Flammability Tester — Flame retardant performance test of carpet material

G245 Carpet Flammability Tester, It is used to detect the effects of small fire sources on the carpet. The test chamber is made of a flame-retardant heat-resistant board that contains a handy sliding panel, and mirror on top of the test chamber enable that the operator can observe the sample during the test.

G245 Carpet Flammability Tester

1、 Hot nut method. The stainless steel nut is heated to 900°C in muffle furnace, and the test sample is placed in the test chamber, and the retaining ring is placed on the sample with crucible tongs. The heated nut is placed in the center of the retaining ring and the nut can be removed after 30 seconds. Afterwards, measurements can be taken to evaluate the spread of the fire point on the sample.

Polymer sheet method. It is recommended to place the test chamber in a laboratory fume hood. The conditioned sample is placed on the movable pedestal in the test chamber and a metal plate with a rounded trim should be placed over the sample. The polymer sheet is placed in the center of the sample to ignite. Measurements can be taken to evaluate the combustion effect after the flame is extinguished.



2、 The carpet flammability tester is used to detect the effects of small fire sources on the carpet. The test chamber is made of flame-retardant heat-resistant board that contains a handy sliding panel, and mirror on top of the test chamber enable that the operator can observe the sample during the test.

Standards compliant

BS 4790 Method for determining the effect of small fire sources on floor covering fabrics (hot metal nut method)
ISO 6925 Flame resistance of floor covering fabric. Tablet test at ambient temperature
BS 6307 Fire test for textile floor materials such as carpets and blankets



Stable Reliable Consistent

G245 Carpet Flammability Tester—— Several Major Features



Touch-tone + timing module operation panel

The tester adopts touch-tone + timing module, which is easy to operate and stable in performance.



Stainless steel body

The tester is made of stainless steel, and the 45 degree observation mirror is made of mirror stainless steel, which is easy to clean, with high temperature resistant and has a long service life.



High temperature resistant asbestos board lining

The inner lining of the tester is made of the high-temperature resistant asbestos material, which is beautiful in appearance and high in safety.



Stable Reliable Consistent

G245 Carpet Flammability Tester—— Field Application



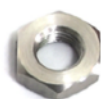
G245 Carpet Flammability Tester, It is used for flame retardant testing of various carpet materials.



It is applicable to the performance verification of new products, quality control of the production department, and the of material properties for the third-party testing organization, the product performance verification laboratory, and the quality and technical supervision department, etc.

G245 Carpet Flammability Tester—— Configuration parameter

Standard configuration



24501

Igniting nut (30g)



24502

Sample fixture
(inner diameter 250mm)

Optional Accessories



24503

Transparent grid gauge / diameter 245 mm,
5 mm for concentric circle pitch distance

Technical Parameters

Control mode: automatic	Fixed panel: 100 × 380 mm
Test chamber size: 380 × 380 × 380 mm	Base plate: 500 × 500 × 6 mm
Sample clamping: pneumatic clamping	Metal wrap angle: 25 × 25 × 1.5 mm
Square metal plate: 230 × 230 × 6.5 ± 0.5 mm , 205 mm hole punching in the center	Inclined angle: 45 °
	Weight: 75kg
Igniting nut: 30 g, M16, with across flat of 26.75 - 27.7mm	Power supply: 220V 50Hz
Sliding panel: 280 × 380 mm	Appearance size: :70cm × 80cm × 120cm



Standard Groups (HK) Limited

For more information, please visit our website or contact us by phone or email

Standard International Group (HK) Limited
Qinsun Instruments Co., Ltd

www.standard-groups.com

24 hours' hotline service number: 400 821 3149

Mail: : Info@standard-groups.com

Tel: 400 821 3149

Mob: 185-0176-3637

Mail: info@qinsun-lab.com