

QINSUN

Stable Reliable Consistent



Multi-functional wear resistance tester G282

Multi-functional wear resistance tester

— Wear resistance performance test of material surface

G282 Multi-functional wear resistance tester, The automatic test mode has the functions of automatic counting, automatic stop and buzzing after the test completion. The clip-on sample fixing method can quickly change test samples and improve test efficiency. The compact structure design, which is flexible and diverse, can be easily moved and meet various practical requirements.

G282 Multi-functional wear resistance tester

1. Multi-functional wear resistance tester is the best choice for wear testing such as surface abrasion, curved grinding, edge grinding, hemming, frosting, edge trimming and raising of woven fabrics, knitted fabrics, coated fabrics, pile fabrics, socks, felts, non-woven fabrics, deep fabrics, yarns, cotton rope plastic film, rubber, leather, paper, and other materials.
2. It can accurately provide the wear performance test results of the material, and meet the wear test of surface abrasion, curved grinding, edge grinding, hemming grinding, frosting, edge trimming and raising.



Standards compliant

GB/T 3920 Textiles, color fastness test, color fastness to wear resistance
ASTM D3514 Test method for pilling resistance and other surface changes of textiles (elastic pad method)
ASTM D3885 Test method for wear resistance of textiles (curved grinding method)
ASTM D3886 Test method for abrasion resistance of textiles. Textile abrasion resistance test method (expansion membrane method)
AATCC 119 Flat grinding discoloration (cream white): wire mesh method
AATCC 120 Discoloration caused by plane abrasion (extinction)
FTMS 191 Down leak-proof test of down feather fabric /5300/5302,
FORD FLTM BN 112-01 Stains of interior materials



Stable Reliable Consistent

G282 Multi-functional wear resistance tester — Several Major Features



Multiple test mode designs

A variety of wear resistance tests can be achieved by replacing the surface abrasion test head (Pneumatic diaphragm type wear resistance test method), the curved abrasion test head, and the frosting attachment.



Multiple load designs

The balance weight adjustment method can be used to replace different weights to meet the load requirements of various test standards.



Smart touch screen control panel

Microcomputer control system is more efficient and reliable, which can be programmed by 7-inch color LCD touch screen to achieve control, detection, calculation, data display and other functions.



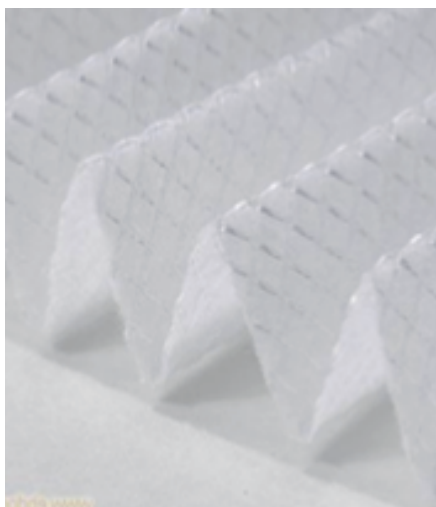
Powerful software features

The enhanced control system handles complex custom programs and simple pre-programmed tests. The operation interface is simple and clear, and the tester is equipped with the pressurized pump to meet various test requirements.



Stable Reliable Consistent

G282 Multi-functional wear resistance tester — Field Application



G282 Multi-functional wear resistance tester, It is used for the evaluation of the surface abrasion resistance of woven fabrics, knitted fabrics, coated fabrics, pile fabrics, socks, felts, non-woven fabrics, deep fabrics, yarns, cotton rope plastic film, rubber, leather, and paper.



It is applicable to the performance verification of new products, quality control of the production department, and the of material properties for the third-party testing organization, the product performance verification laboratory, and the quality and technical supervision department, etc.

G282 Multi-functional wear resistance tester — Configuration parameter

Standard configuration



28201

Loading weight 0.5LB



28202

Loading weight 1LB



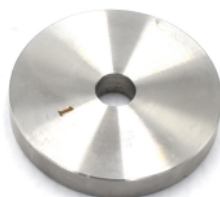
28203

Loading weight 2LB



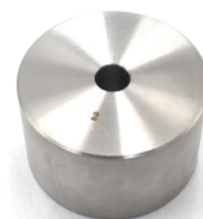
28204

Balance weight 0.5LB



28205

Balance weight 1LB



28206

Balance weight 2LB



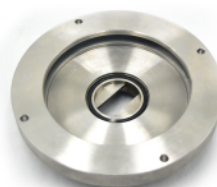
28207

Loading wrench



28208

Drum-head



28209

Plane grinding fixture kit / set

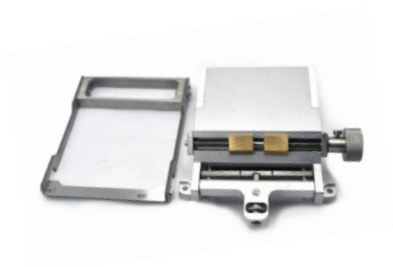


28210

Calibrated block

G282 Multi-functional wear resistance tester — Configuration parameter

Optional Accessories



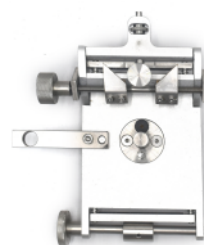
28211

Curved grinding fixture set



28212

Curved bar



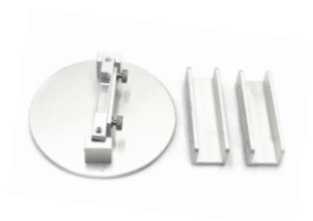
28213

Depth grinding fixture kit



28214

Frosting accessories / sets



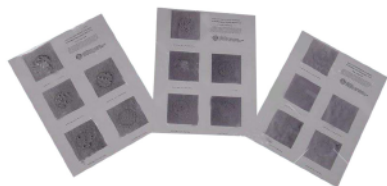
28215

Cloth edge and folding friction specimen clip / set



28216

ASTM D3514
Elastic friction pad



28217

ASTM D3514
3 sets of rating cards



28218

Calibration tape



28219

“O” with two empty sandpaper

G282 Multi-functional wear resistance tester — Configuration parameter

Optional Accessories



28220

“600” with two empty sandpaper



28221

“320J” with two empty sandpaper



28222

Polyester cotton plain cloth



28223

Stainless steel friction mesh



28224

Micrometer

Technical Parameters

Inner diameter of the grip ring:94 mm	Stroke:25 mm
Locking ring height:9.5mm	Air pressure:62kPa (9psi)
Test stop: Countdown to the number of turns, automatic stop when wear-through, depth automatic stop	Operating mode: automatic
	Weight: :55kg
Number of turns settings:1-999999	Power supply: :220V 50Hz
Speed:120±15 /min	Appearance size:800mmx500mmx500mm



Standard Groups (HK) Limited

For more information, please visit our website or contact us by phone or email

Standard International Group (HK) Limited
Qinsun Instruments Co., Ltd

www.standard-groups.com

24 hours' hotline service number: 400 821 3149

Mail: : Info@standard-groups.com

Tel: 400 821 3149

Mob: 185-0176-3637

Mail: info@qinsun-lab.com